

# Belonging to God: A First Catechism

Questions 1-10 for Bible Buddies  
& We Believe Kids!

With pictures from  
Congregational Ministries  
Presbyterian Church (U.S.A.) 2013

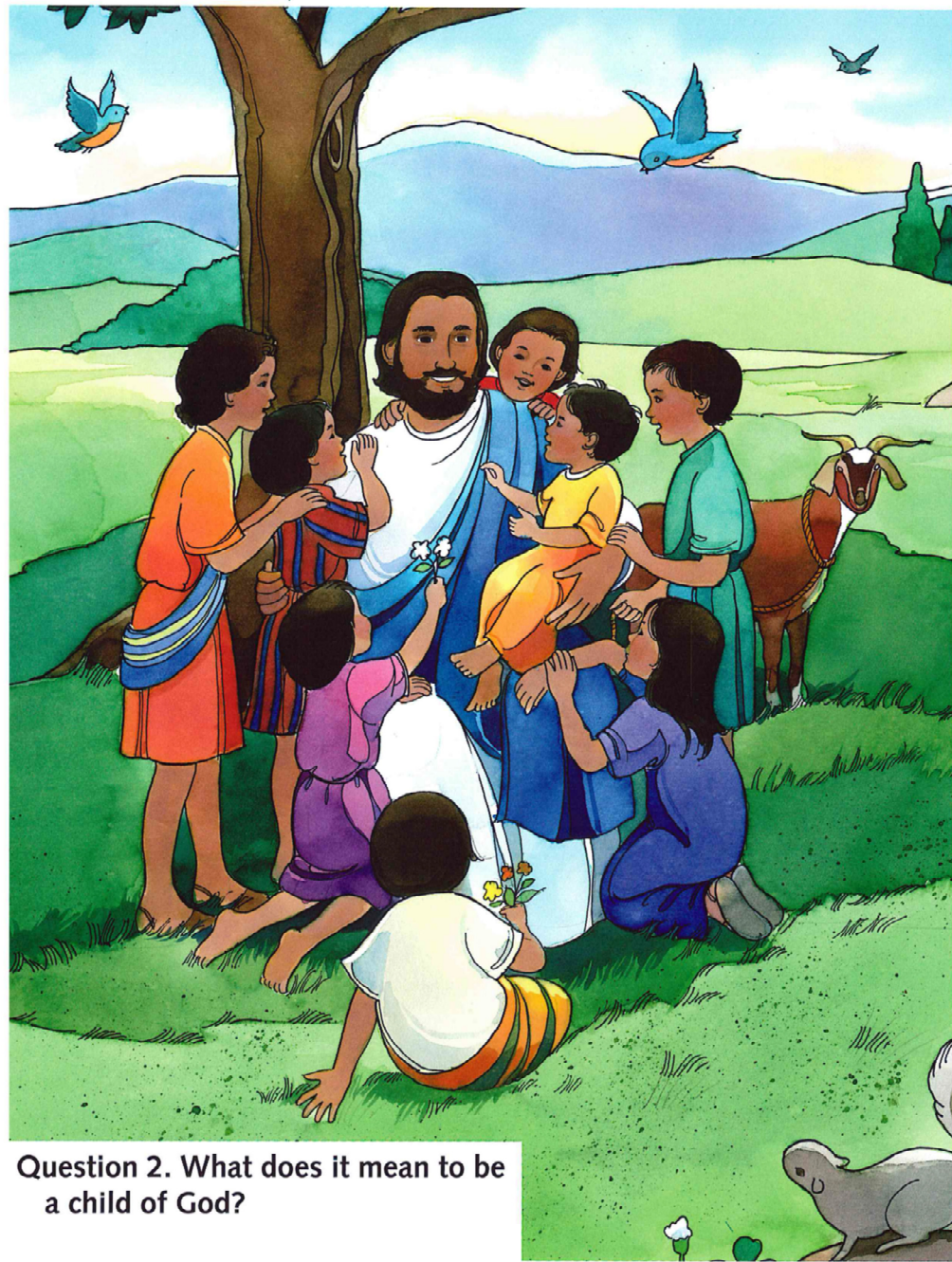


**Question 1: Who are you?**

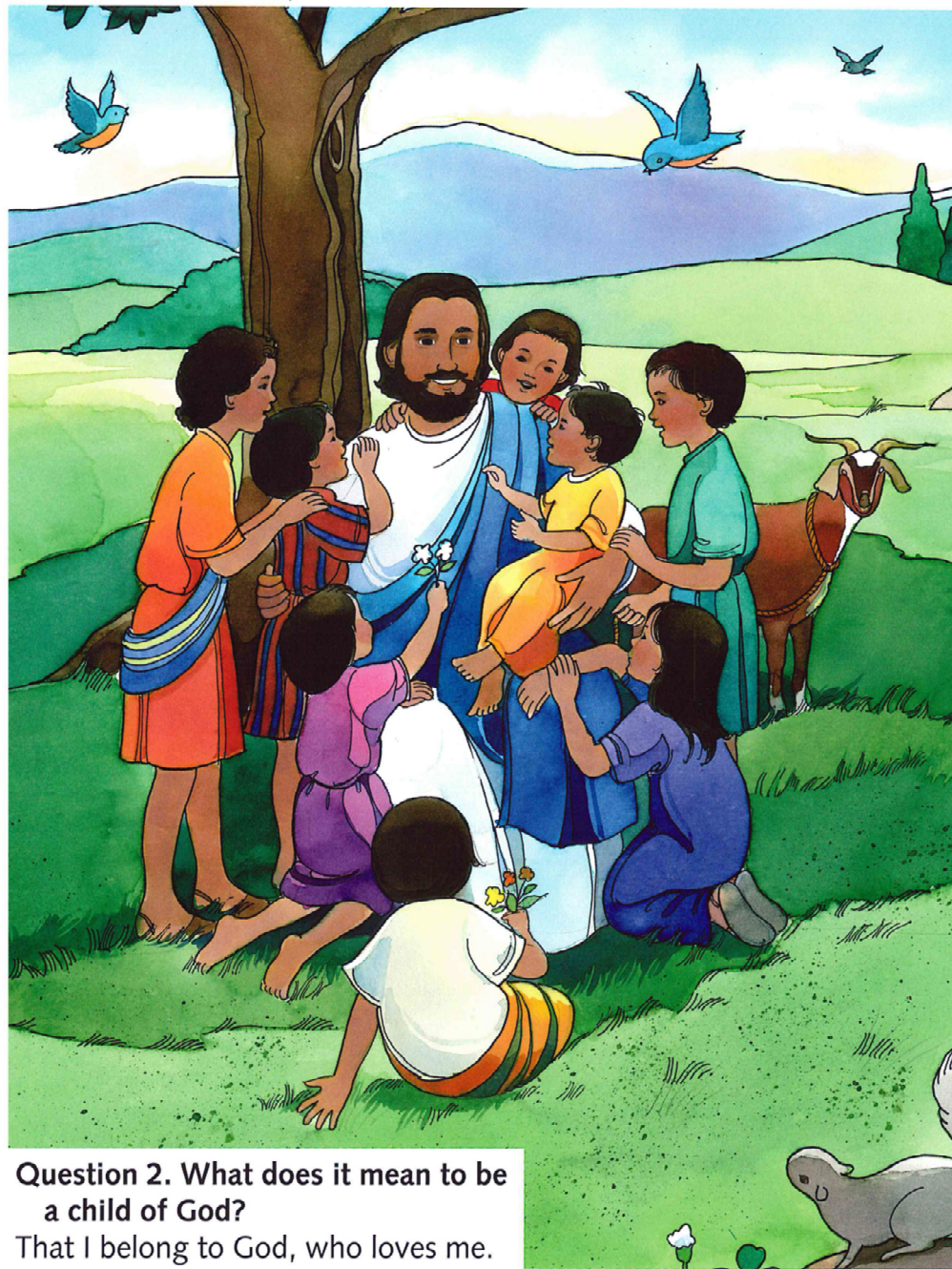


**Question 1: Who are you?**  
**A. I am a child of God!**





**Question 2. What does it mean to be a child of God?**



**Question 2. What does it mean to be a child of God?**

That I belong to God, who loves me.

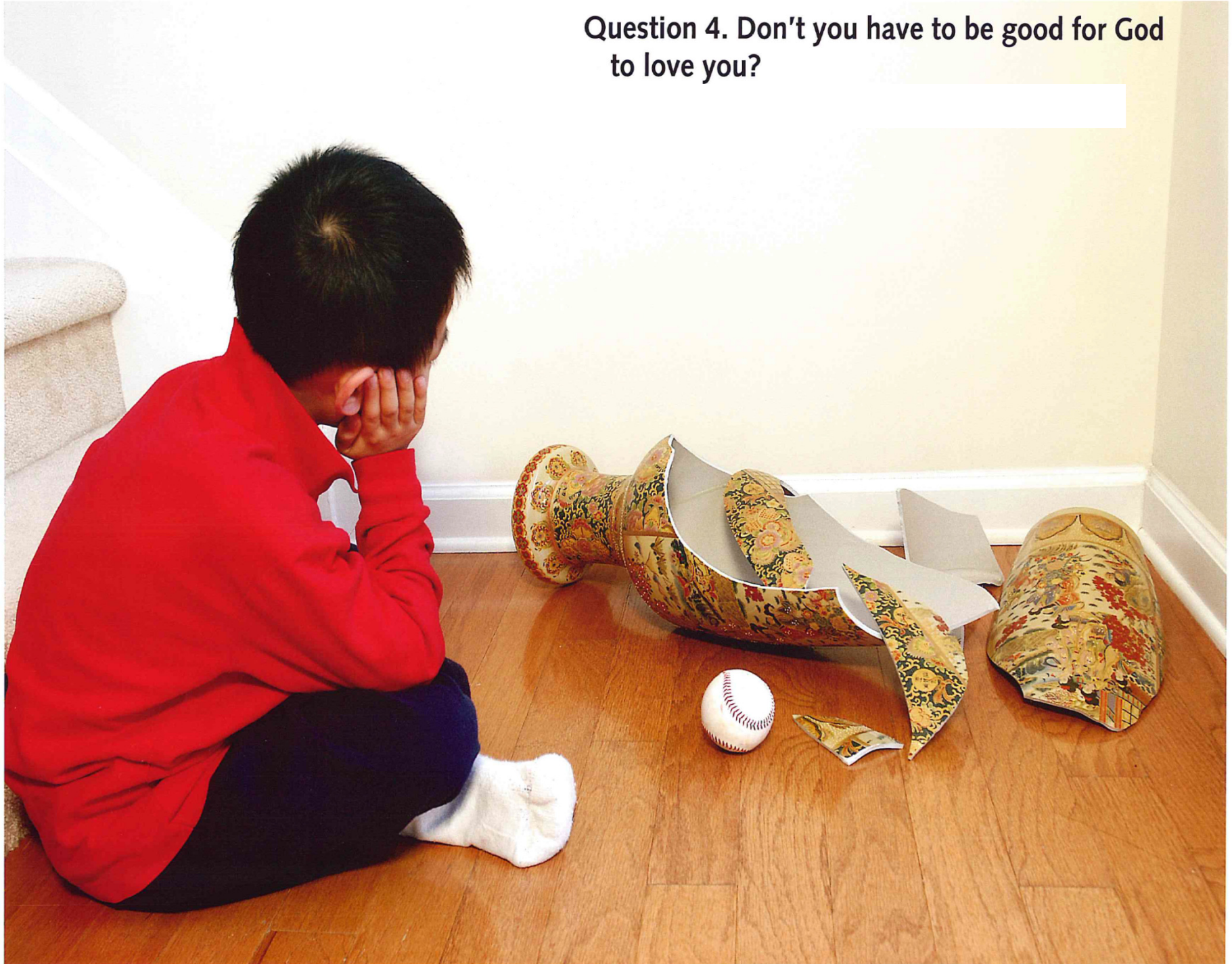
**Question 3. What makes you a child of God?**



**Question 3. What makes you a child of God?**  
Grace—God's free gift of love that I do not deserve  
and cannot earn.



Question 4. Don't you have to be good for God to love you?





**Question 4. Don't you have to be good for God  
to love you?**

No. God loves me in spite of all I do wrong.



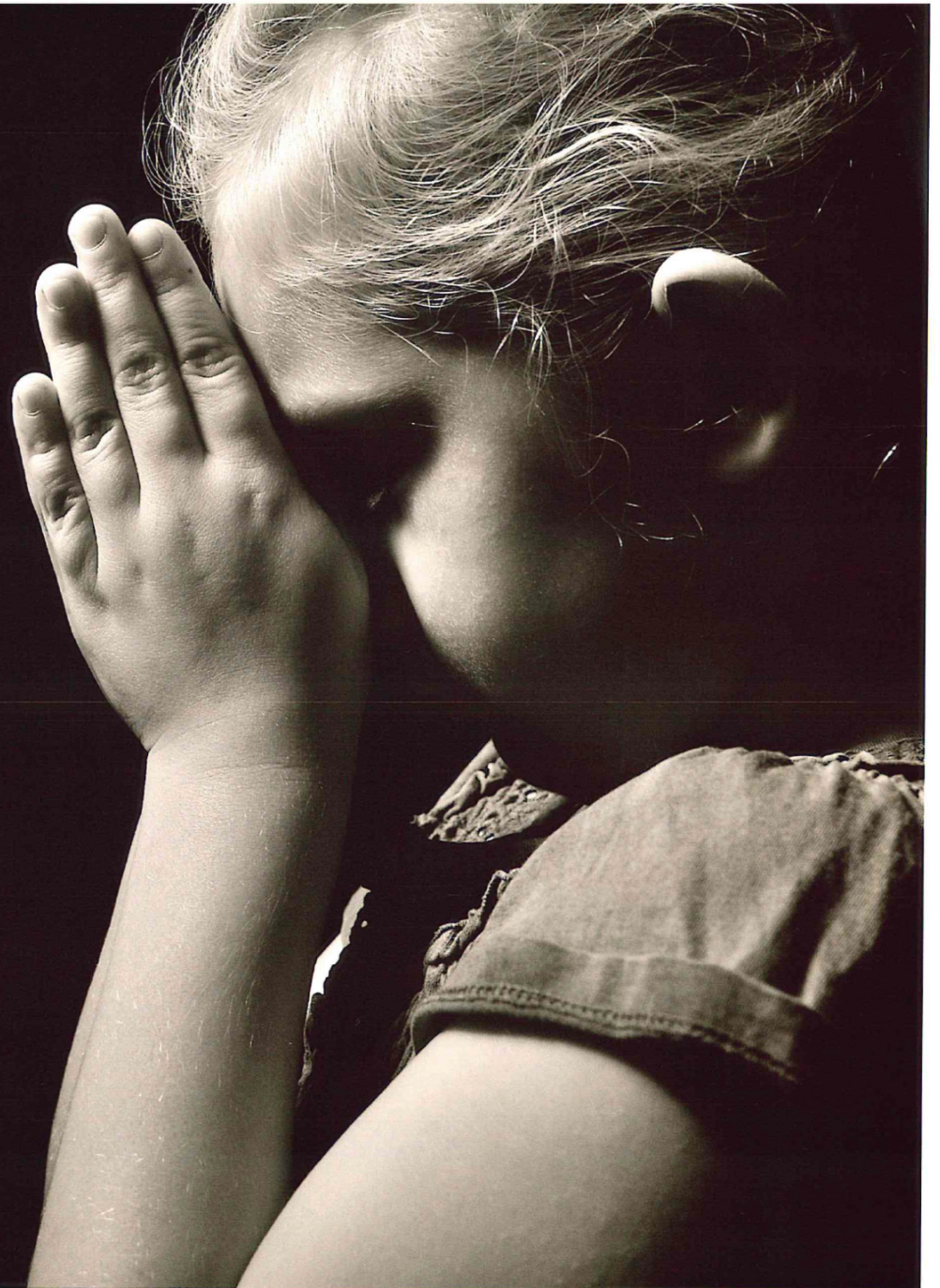
**Question 5. How do you thank God for this gift of love?**



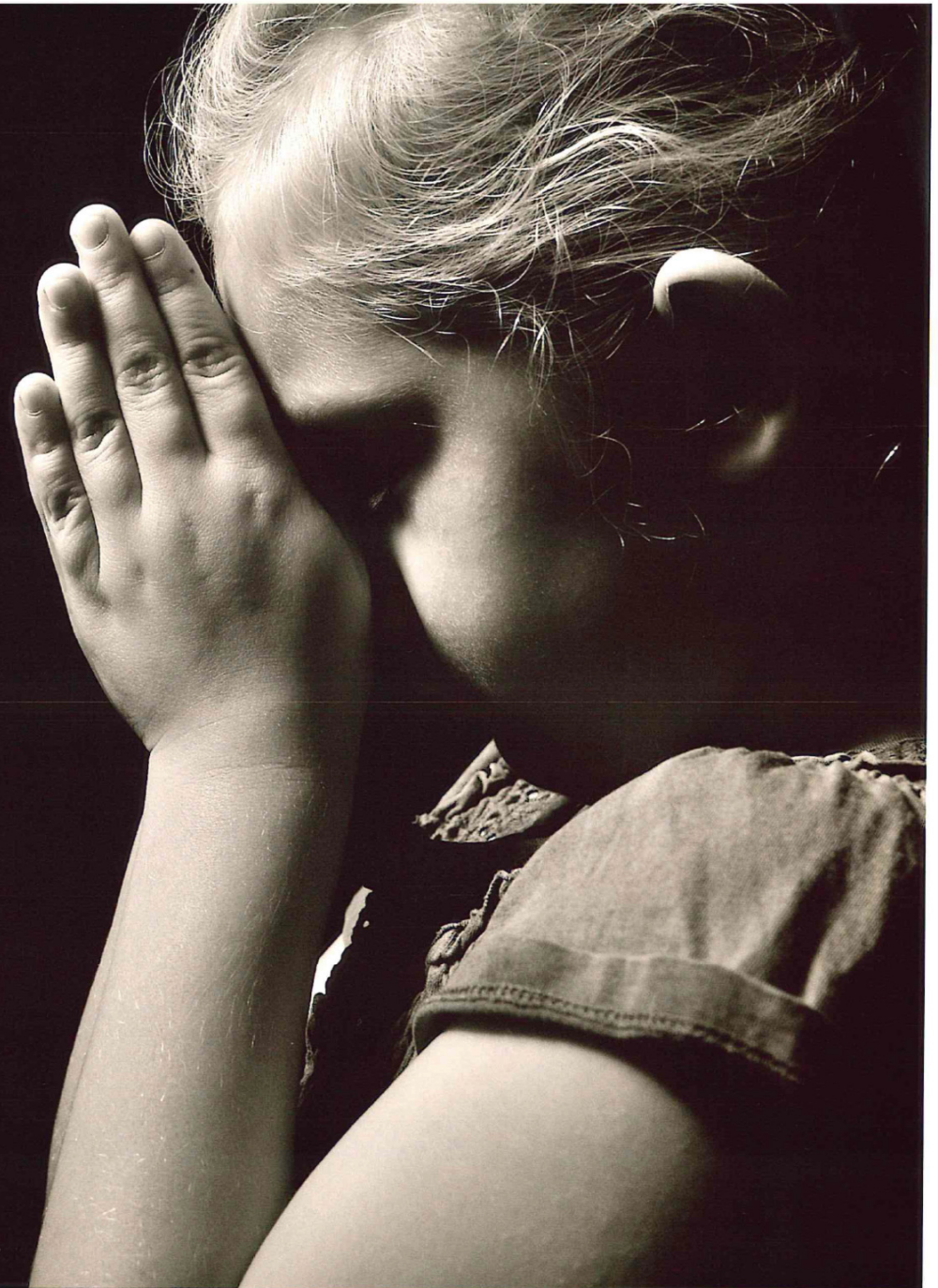
**Question 5. How do you thank God for this gift of love?**  
I promise to love and trust God with all my heart.



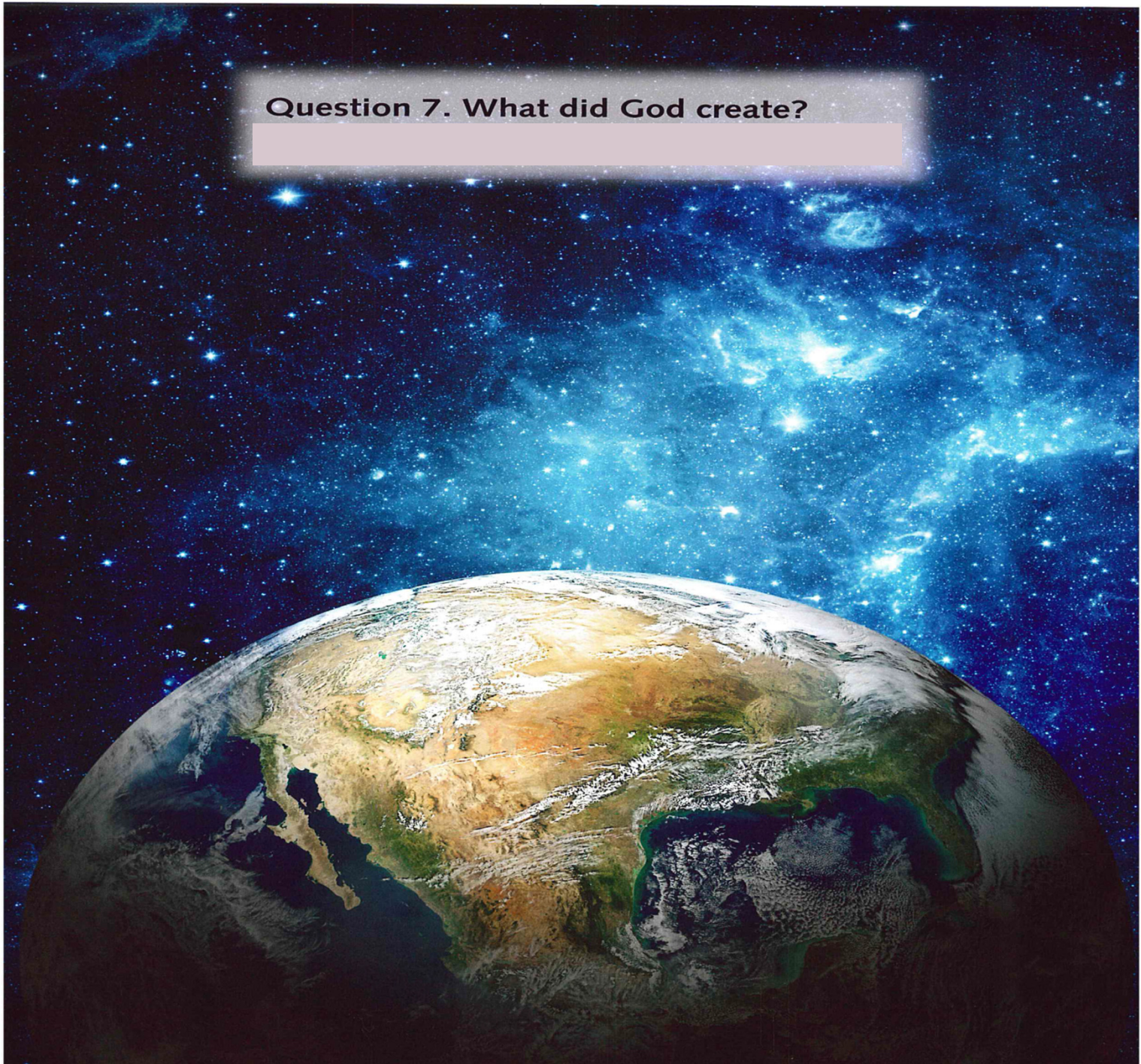
Question 6. How do you love God?



**Question 6. How do you love God?**  
By worshiping God, by loving others, and  
by respecting what God has created.



Question 7. What did God create?



**Question 7. What did God create?**  
God created all that is, seen and unseen.



Question 8. What is special about human beings?





**Question 8. What is special about human beings?**  
God made us, male and female, in the image of God.

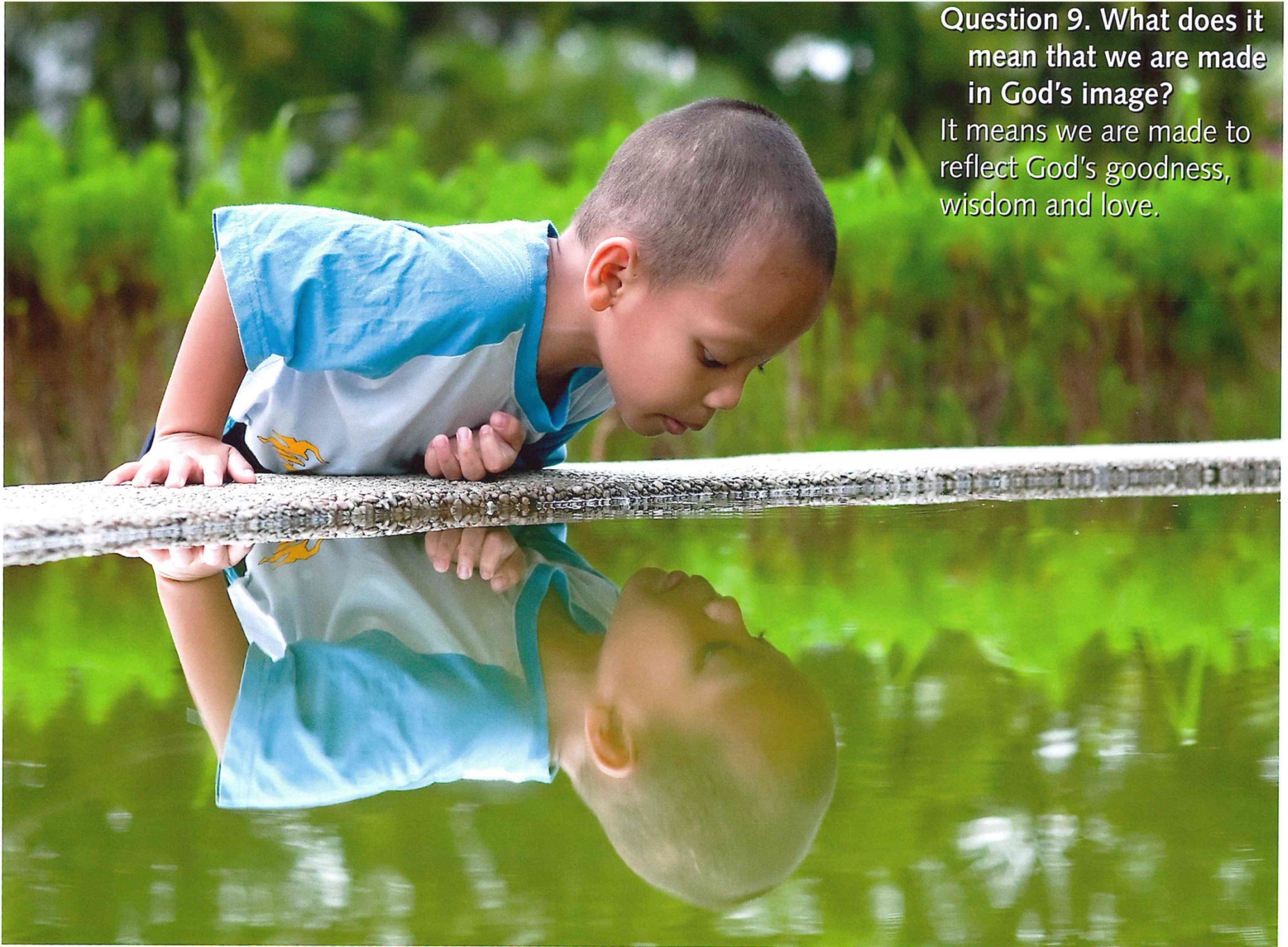


Question 9. What does it mean that we are made in God's image?

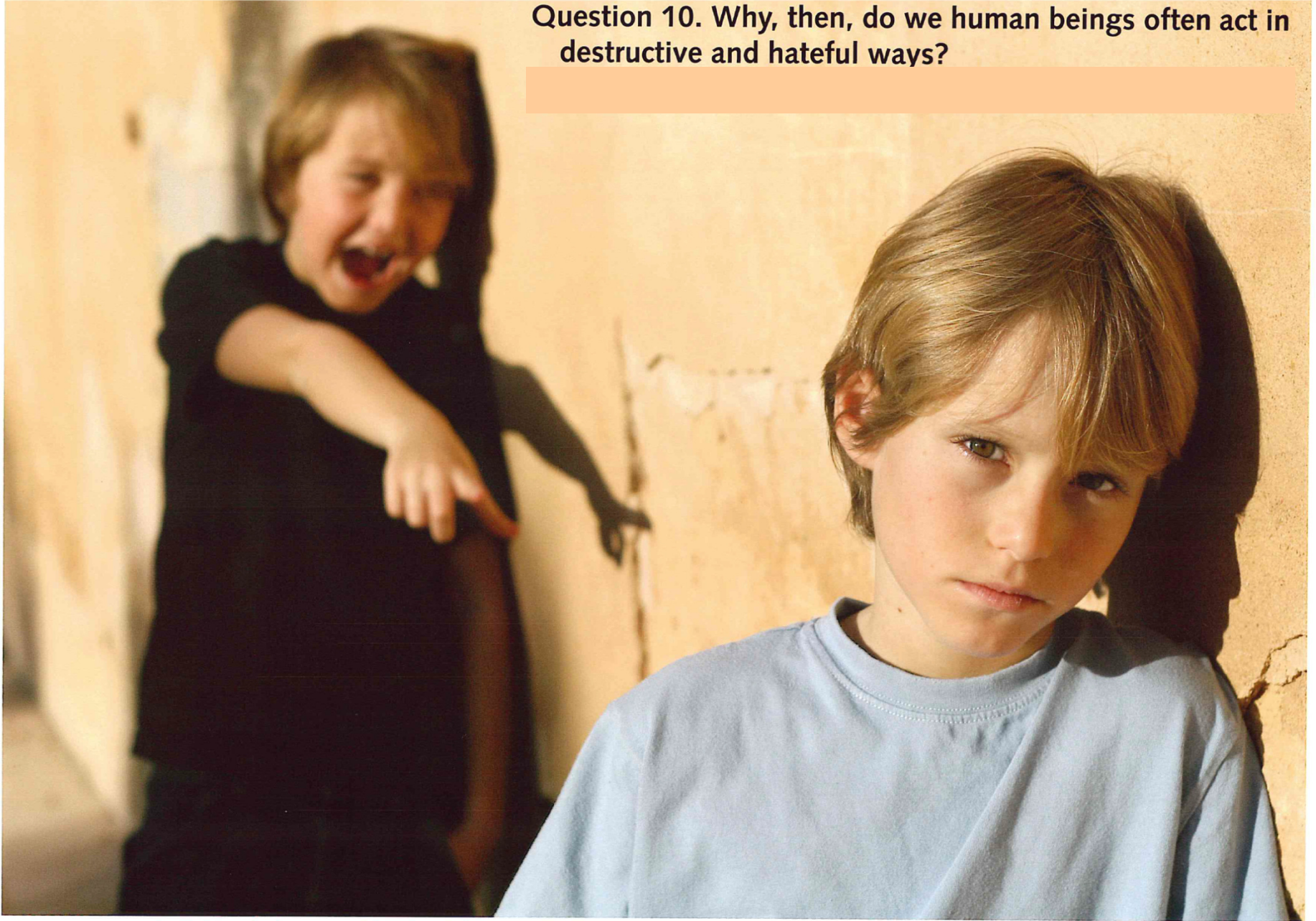


Question 9. What does it mean that we are made in God's image?

It means we are made to reflect God's goodness, wisdom and love.



**Question 10. Why, then, do we human beings often act in destructive and hateful ways?**



**Question 10. Why, then, do we human beings often act in destructive and hateful ways?**

Because we have turned away from God and fallen into sin.

